

Gestetner

TOTAL DOCUMENT SOLUTIONS



DSm735/DSm745



THE SECURE CHOICE
FOR OFFICE DOCUMENT
PRODUCTION

Aficio™

Secure and productive high-quality output for the office environment



Everyday document security is becoming increasingly important. Preserving the confidentiality of your business information and effectively managing your document workflow is vital in the modern office.

The DS_m735 and DS_m745 from Gestetner address document security directly with advanced security features including Windows Authentication, for controlled access, and enhanced printing solutions.

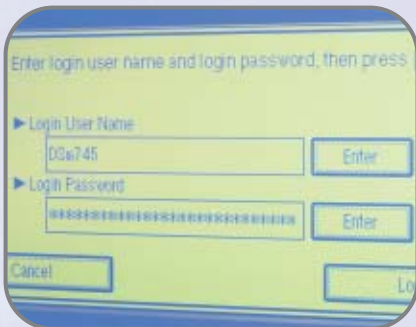
To boost productivity, the DS_m735 and DS_m745 combine fast network print, copy, scan and fax functionality with advanced scanning technologies and versatile finishing options for the production of professional-looking documents.

Exceed your expectations with Gestetner's DS_m735 and DS_m745, the secure and productive choice for the busy office.

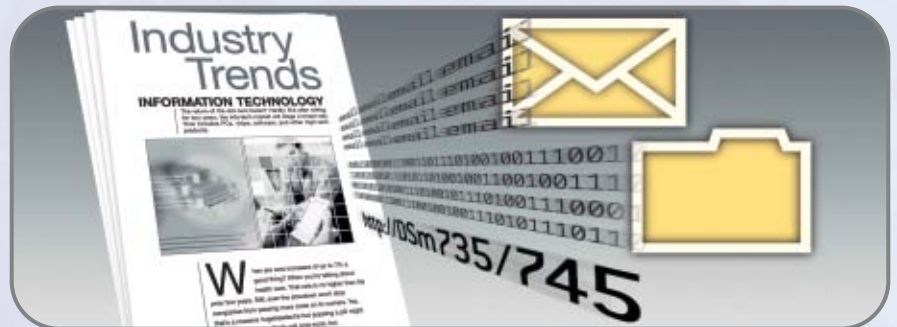


Gestetner's unique approach, links people with knowledge and expertise, combining our wide experience of innovative, document related Products and Software solutions with our world class Business and Professional Services to deliver the best Total Document Solutions for your business.

Restrict access with the Windows Authentication feature



Communicate and share your documents effectively with time and cost efficient document distribution



Increase your document productivity

Manage your office document workflow efficiently with Gestetner's DSm735 and DSm745, which deliver print and copy at fast speeds of 35 and 45 pages per minute (ppm) plus scan and fax functionality. Both models provide true 600dpi quality and double-sided output on paper sizes up to A3, allowing you to meet all your business needs.

Powerful high-level security

The DSm735 and DSm745 are highly intelligent when it comes to document security. Windows Authentication links access to the device via each user's Windows log-in, preventing unauthorized use and enabling every print job to be tracked by the Network Administrator. Conveniently, this means users only need to remember one password. Additional security is available with the device's encryption feature, which scrambles certain data, including passwords and the address book, safeguarding against interception and falsification of information. Security for your documents is further increased with the Document Overwrite Security (DOS) feature, which overwrites temporary data on the device's hard disk.

Work intelligently with enhanced printing features

Maximize productivity with enhanced printing features on the DSm735 and DSm745. Acting as a virtual mailbox, Hold Print enables users to print multiple print jobs at a single and convenient time. Confidential documents are secured with Locked Print, which holds printing of a document until the user inserts the document's password at the device's control panel. With Sample Print users can print one copy of a document as a sample for proof reading before the remaining copies are printed. Finally, with Stored Print, frequently used documents can be reproduced quickly and easily direct from the control panel. This saves a document and all associated print settings in the device's hard disk. All these intelligent printing features are accessed via the straightforward RPCS printer driver.

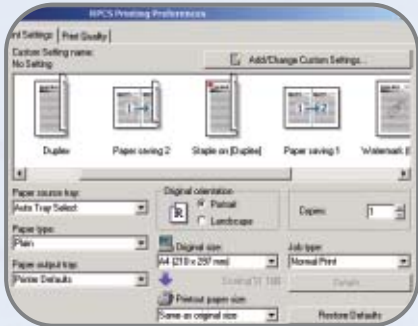
Advanced document communication features

The intelligent scanning technologies on the DSm735 and DSm745 are designed to help you share files efficiently and easily. Simply scan your documents to any network folder for easy distribution and convenience with Scan-to-Folder. Use Scan-to-Email to send the scanned documents to any email address, direct from the easy-to-use control panel. Additionally, avoid sending large documents over your network with Scan-to-URL, which stores scanned documents on the device's hard disk. A URL address is distributed by email, enabling the document to be retrieved via a web browser interface.

Convenient fax capabilities

Work more effectively with the productive and easy-to-use fax option on the DSm735 and DSm745. Send faxes directly from your PC with paperless fax, saving time and paper. For additional convenience, received faxes can be sent directly to a designated email address or network folder.

Intuitive, easy-to-use RPCS print driver allows you to print documents in your preferred format



Access and automatically update your company's email address book with LDAP



Print, copy, scan and fax from one productive device



Easy administration

Management of these devices is easier for Network Administrators, with automatic email notification and LDAP (Lightweight Directory Access Protocol). Even when off-site, you can access information regarding paper and toner levels; and network settings, via email. With LDAP, an automatically updated company address book is stored on the device, saving both the user and Network Administrator time inputting details.

Advanced connectivity for the modern office

With seamless integration to all leading network environments, the DSm735 and DSm745 provide users with the flexibility to work effectively. Furthermore, users can 'hot desk' anytime, anyplace with the Wireless LAN (IEEE802.11b) connectivity option.

Web Image Monitor

Web Image Monitor comes pre-installed on these devices and is accessed through a standard web browser interface. As a result, Network Administrators save valuable time by managing the DSm735 and DSm745 directly from their PC, from setting user names to configuring each function. At the same time, users can view, download and re-print documents stored within the document server, or simply check the status of paper trays or toner levels in the device, increasing efficiency and productivity.

Web SmartDeviceMonitor

Web SmartDeviceMonitor software gives Network Administrators central control of your connected document devices through a web-browser interface. Easily downloaded and installed, it allows you to manage these devices remotely from any desktop, including automatic configuration to your specifications and group and user profiling. Furthermore, Web SmartDeviceMonitor constantly monitors your document devices to provide proactive communication of their status. By quickly emailing alerts to users, devices are on-line in no time maximizing productivity.

Environmental benefits

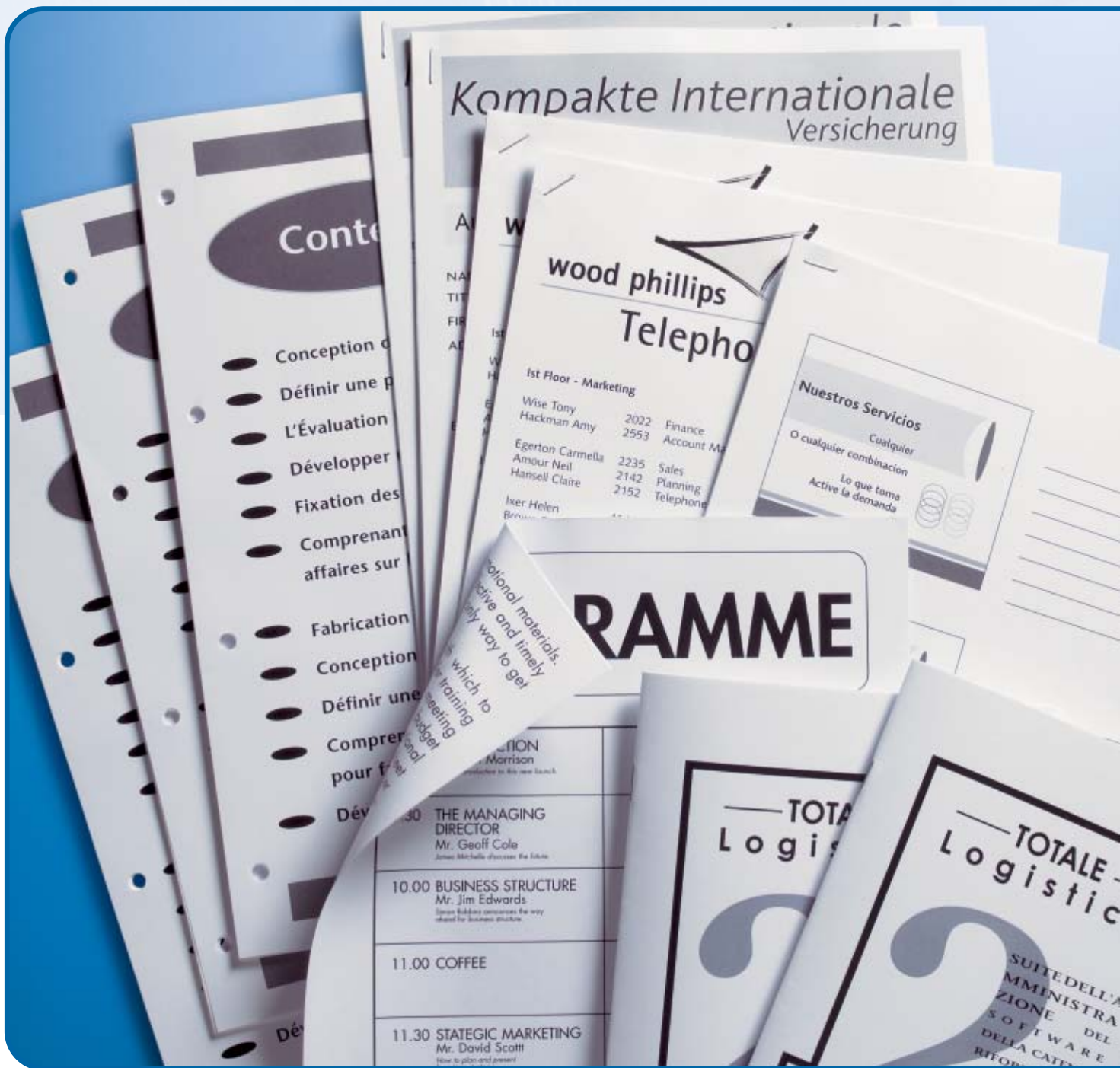
Gestetner is committed to sustaining the environment and the considerate use of paper. Achieve energy efficiency through the design of the DSm735 and DSm745, which incorporates low power consumption, fast warm-up times and an energy saver mode. Unnecessary paper usage in the office is reduced with double-sided output and advanced scanning functionalities such as Scan-to-URL and Scan-to-Folder.

Outstanding Software and Services

Complementing the DSm735 and DSm745, Gestetner offers a superb range of Software Solutions and Services, which are designed to add value and ensure that our devices continue to operate seamlessly and reliably. Covering all aspects of your business, including document management, network control, consultancy, training and unrivalled support, these innovative products and services offer a tailor made solution to improve productivity, workflow efficiency and cost control throughout your organization.

Aficio™

The Gestetner DSm735 and DSm745 bear the Aficio Symbol – your sign of digital technology, innovation and customer support in action.



Complete the job with professional finishing

Professional-looking documents are within reach with the DSm735 and DSm745. Both models provide you with the means to be more productive with a range of outstanding document finishing options

including Hole Punch, Stapling and Booklet Making. You can now create documents with a visual impact that will be noticed by clients and colleagues alike.

SPECIFICATIONS

DSm735/DSm745

Printer (Option)

Print speed

35/45 prints per minute

Printer language/resolution

Standard: PCL5e, PCL6, RPCS™
Option: Adobe® PostScript® 3™

Resolution

Maximum: 600 x 600dpi (2,400dpi equivalent x 600dpi with smoothing)

Interface

Standard: USB 2.0 Ethernet 10 base-T/
100 base-TX
Option: Bi-directional IEEE1284
FireWire (IEEE1394)
Wireless LAN (IEEE802.11b)
Bluetooth

Memory

384MB + 40GB Hard disk drive

Network protocol

TCP/IP, IPX/SPX, SMB, AppleTalk

Supported environments

Windows® 95/98/Me/NT4.0/2000/
XP/Server 2003
Novell® NetWare® 3.12/3.2/4.1/4.11/
5.0/5.1/6/6.5
UNIX Sun® Solaris 2.6/7/8/9/10, HP-UX
10.x/11.x/11iv1/11i
SCO OpenServer 5.0.6/5.0.7
RedHat® Linux 6.x/7.x/8.0/9/Enterprise
IBM® AIX v4.3/5L v5.1/5L v5.2/5.3
Macintosh 8.6 - 9.2.x (OS X Classic)
Macintosh X v10.1 or later (native mode)

Copier

Copying process

Twin laser beam scanning & electro-
photographic printing

CPU

RM7035C-466 466MHz

Copy speed

35/45 copies per minute

Resolution

600dpi

Multiple copy

Up to 999

Warm up time

15/20 seconds

First output speed

4.3/3.6 seconds

Zoom

25 - 400% (in 1% steps)

Memory

Standard: 128MB + 40GB Hard disk drive
Maximum: 384MB + 40GB Hard disk drive

Paper input capacity

Standard: 2 x 500-sheet trays
1 x 50-sheet bypass tray
Maximum: 3,550 sheets

Paper output capacity

Standard: 500 sheets
Maximum: 2,875 sheets

Paper size

A6 - A3

Paper weight

Paper trays: 1/2/duplex trays: 64 - 105g/m²
Paper trays: 3/4/LCT: 60 - 105g/m²
Bypass tray: 52 - 163g/m²

Dimensions (W x D x H)

670 x 650 x 720mm

Weight

Less than 79kg

Power source

220 - 240V, 50/60Hz

Power consumption

Operation: Maximum 1.37kW
Energy saver mode: Less than 130W
Auto Off mode: Less than 8.5W

Scanner (Option)

Scan speed

Maximum: 52 originals per minute
(MH, A4/LEF)

Resolution

Maximum 600dpi (TWIN: 1,200dpi)

Original size

A5 - A3

Output formats

PDF/JPEG/TIFF

Bundled drivers

Network TWAIN

Scan-to-email

SMTP, TCP/IP

Destination addresses

Maximum 500 per job

Stored destination addresses

Maximum 2,000

Address book

Via LDAP or locally on Hard disk drive

Scan-to-folder

SMB, FTP or NCP protocol
(with log-in security)

Destination

Maximum 50 folders per job

Fax (Option)

Circuit

PSTN, PBX

Compatibility

ITU-T (CCITT) G3
ITU-T (T.37) Internet Fax
ITU-T (T.38) IP Fax

Modem speed

Maximum 33.6Kbps

Resolution

Standard/detail: 200 x 100/200dpi
Maximum: 400 x 400dpi (option)

Compression method

MH, MR, MMR, JBIG

Scanning speed

Less than 0.43 seconds
(200 x 100/200dpi, A4/SEF), ARDF

Memory capacity

Standard: 12MB
Maximum: 44MB

Memory backup

Yes

Software

SmartDeviceMonitor™¹
Web SmartDeviceMonitor™¹
Web Image Monitor¹
DeskTopBinder™ Lite¹

¹ Bundled with printer/scanner option

Other options

- Platen cover
- 80-sheet Automatic Reverse Document Feeder
- 2 x 500-sheet paper trays
- 125-sheet one-bin tray
- 1,500-sheet large capacity tray
- 1,000-sheet finisher (3 position stapling)
- 2,500-sheet multi-tray finisher (4 position stapling)
- 1,150-sheet booklet finisher (4 position stapling)
- 2/4 hole punch unit
- Data Overwrite Security Unit
- Copy Data Security Unit
- File Format Converter
- 2nd Super G3 port
- User Account Enhance Unit
- Browser Unit
- VM Card
- Key Counter Bracket
- PI Board
- Scanner Accessibility Option
- Fax Marker

Company management systems applied during the manufacturing of all Gestetner products conform to ISO9001 quality and ISO14001 environmental management standards.

As an ENERGY STAR Program Participant, Gestetner has determined that this product meets the ENERGY STAR guidelines for energy efficiency.

We reserve the right to make amendments to the technical specifications and external appearance of this equipment. Please note that the full range of options shown in this publication may not always be available. All brand and product names are recognized and hereby acknowledged, as registered trademarks of their respective owners.



Gestetner

Part of the NRG group

www.gestetner.com



6534743006680