

**Gestetner**

TOTAL DOCUMENT SOLUTIONS



# DSm616/620/620d



FOUR DIFFERENT  
DOCUMENT DEMANDS, ONE  
COMPACT SOLUTION

**Aficio™**

## The multifunctional device that answers all your daily document needs

If you are looking for the productivity benefits of digital copying, or want a sophisticated multifunctional product, the Gestetner DSm616, DSm620 and DSm620d are the ideal choice. Designed specifically for small offices or workgroups, they will handle all your document output needs with ease.

The innovative design further increases their performance by incorporating network printing, scanning and faxing features, enabling these machines to be used as a copier or as a multifunctional product. This, combined with productivity enhancing features such as Scan-to-Email, the RPCS print driver and web-based management tools, means that these machines will meet your daily document demands and raise your productivity to even higher levels.

The Gestetner DSm616, DSm620 or DSm620d will prove to be a reliable and invaluable asset.



*Gestetner's unique approach, links people with knowledge and expertise, combining our wide experience of innovative, document related Products and Software Solutions with our world class Business and Professional Services to deliver the best Total Document Solutions for your business.*

The machines are ideal where space is an important factor. With a compact footprint they will fit into any small office or workgroup



Fast, high quality double-sided copying, printing and scanning are available on the DSM620d – helping you to save valuable time and paper



The digital 'scan once, copy many' process means each copy is in effect an original, guaranteeing superb quality copies every time



#### **Superb quality digital copying**

As copiers, the DSM616, DSM620 and DSM620d consistently produce the superb quality copies that come with digital technology. Using the digital 'scan once, copy many' process, each copy has the look and feel of an 'original' produced at an outstanding true 600dpi resolution from the first to last sheet of every run – on paper up to A3 size.

#### **Speed and productivity**

For a truly outstanding high level of performance, the machines have fast warm up and first copy times together with speeds of 16 or 20 copies per minute, respectively. The Automatic Document Feeder (ADF) ensures multi-page documents are handled effortlessly, and with all paper capacity options taken, long run copy jobs are delivered without interruption. For improved productivity combined with time and paper cost savings, double-sided copying is available on the DSM620d, via the Automatic Reverse Document Feeder (ARDF). All this combines to ensure a smooth, streamlined document workflow.

#### **Space saving multifunctional design**

Specifically designed for any small office or workgroup, the DSM616, DSM620 and DSM620d are ideal, when space and time are at a premium. All the functions come from one compact unit, instead of four separate machines, to deliver a single, cost effective solution for all your daily copy, print, scan and fax needs.

#### **Fast, efficient network printing**

The DSM616, DSM620 and DSM620d are also fast, effective network printers. Speeds of 16 or 20 prints per minute and the same true 600dpi print resolution ensure quick, consistent quality prints every time, even when printing multi-page documents. The DSM620d machine enables lengthy documents, such as business reports, to be produced double-sided, reducing both paper usage and costs. The RPCS print driver displays easy to follow graphical icons to guide you confidently through any print job. In terms of use, nothing could be simpler.

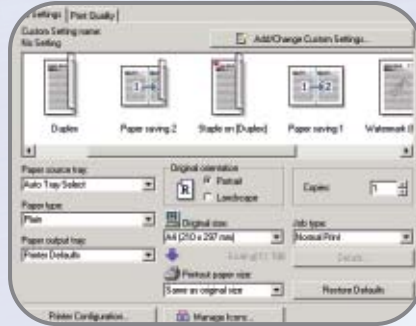
#### **All-round network connectivity**

These machines are compatible with all leading network environments, to integrate quickly and effortlessly into your existing network. A Bluetooth option is available for today's increasingly mobile workplace. Alternatively, the Wireless LAN (IEEE802.11b) option enables you to place your machine in the most convenient position in your office without the need for huge lengths of cabling. Whatever your needs, a range of flexible connectivity options are available to suit your organisation and its working practices.

With Scan-to-Email simply type the address and safely send any document directly to its destination



The easy-to-use RPCS driver uses a series of icons to confidently guide you step-by-step through any print job



Compatible with all leading network environments, these devices benefit from a range of connectivity options



### Quick, cost saving scanning solutions

For increased productivity and convenience, these machines have high resolution 600dpi digital scanning. Multi-page documents are simply scanned via the ADF, while double-sided documents are effortlessly handled via the ARDF. Another productivity enhancing feature is the Scan-to-Email facility that allows you to scan documents and send them, as email attachments, directly to named recipients from the easy-to-use control panel. Email addresses can be typed manually or accessed from the machine's address book. Using the ScanRouter software all users can scan and distribute documents to pre-designated network folders, from the DS616, DS620 and DS620d. This enhances your organisation's information flow by bridging the gap between paper documents and digital communications.

### Flexible faxing

Enhanced by fast transmission times, the DS616, DS620 and DS620d bring you a choice of fax capabilities, from both the control panel and the desktop. With fast scanning and Speed, Quick and Group Dialling, everyday faxing is available from the simple to use control panel. Alternatively, the easy-to-use LAN-Fax feature allows you to send a fax direct from your PC, saving time and paper as well as ensuring high document image quality for the receiver. Another convenient feature of the DS620 and DS620d is a 1-bin Tray to keep incoming faxes separate from other document output.

### Innovative web-based software tools

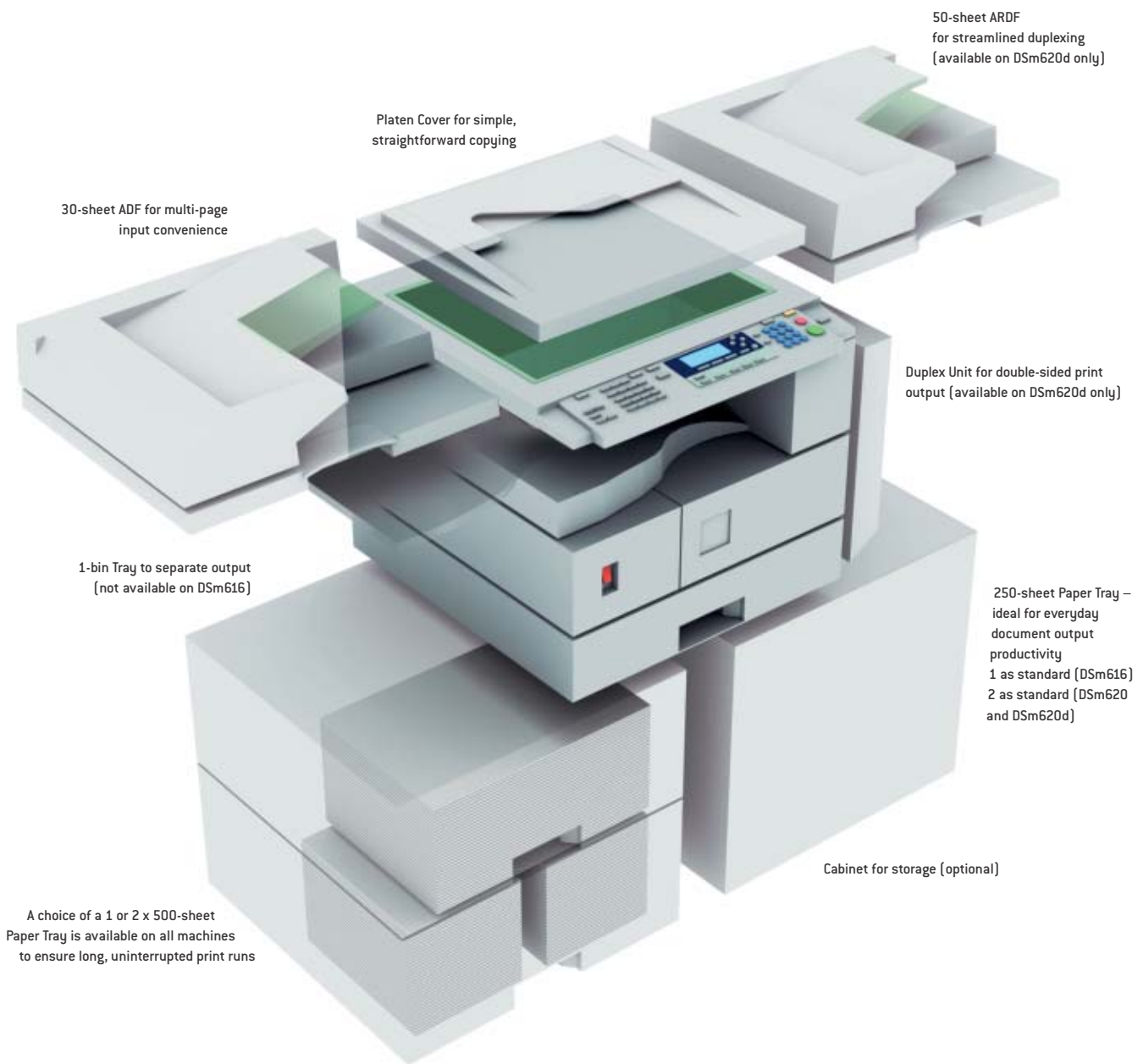
Web Image Monitor comes pre-installed on these devices and is accessed through a standard web browser interface. This allows users to monitor paper and toner levels, change network settings and manage the address book directly from their PC, increasing efficiency and productivity. Web SmartDeviceMonitor software gives Network Administrators central control of your connected document devices through a web-browser interface. Easily downloaded and installed, it allows you to manage these devices remotely from any desktop, including automatic configuration to your specifications and group and user profiling. Furthermore, Web SmartDeviceMonitor constantly monitors your document devices to provide proactive communication of their status. By quickly emailing alerts to users, devices are on-line in no time maximizing productivity.

### Outstanding Software and Services

Complementing the DS616, DS620 and DS620d, Gestetner offers a superb range of Software Solutions and Services, which are designed to add value and ensure that our devices continue to operate seamlessly and reliably. Covering all aspects of your business, including document management, network control, consultancy, training and unrivalled support, these innovative products and services offer a tailor made solution to improve productivity, workflow efficiency and cost control throughout your organization.

## Aficio™

*The Gestetner DS616, DS620 and DS620d bear the Aficio symbol – your sign of digital technology, innovation and customer support in action.*



**A productive document solution to meet your needs**

No small office or workgroup has the same document production needs. Each one has its own different daily demands, workflow systems and procedures. Whether the Gestetner DSm616, DSm620 and DSm620d are used as copiers or multifunctional devices, they allow you to take advantage of copying, printing, scanning and faxing

from a single, compact machine. You also have the added choice of the paper handling and performance enhancing features shown above. All of which means you can select the most productive and effective document solution for your current and future needs.

# SPECIFICATIONS

# DSm616/DSm620/DSm620d

## Copier

### Copying process

Twin laser beam scanning and electro-photographic printing

### Copy speed

16/20 copies per minute

### Resolution

600dpi

### Multiple copy

Up to 99

### Warm-up time

Less than 15 seconds

### First output speed

Less than 6.5 seconds

### Zoom

50 - 200% (in 1% steps)

### Memory

Standard: 16MB

### Paper input capacity

Standard:

100-sheet bypass tray  
DSm616: 250-sheet paper tray

DSm620/DSm620d:  
2 x 250-sheet paper trays

Maximum:

DSm616: 1,350 sheets  
DSm620/DSm620d: 1,600 sheets

### Paper output capacity

Standard: 250 sheets (internal tray)

### Paper size

Standard tray: A5 - A3

Bypass tray: A6 - A3

Duplex unit: A5 - A3

### Paper weight

Standard tray: 60 - 90g/m<sup>2</sup>

Bypass tray: 52 - 162g/m<sup>2</sup>

Duplex unit (DSm620d): 64 - 90g/m<sup>2</sup>

### Dimensions (W x D x H)

DSm616: 550 x 568 x 420mm

DSm620: 550 x 568 x 558mm

DSm620d: 587 x 568 x 558mm

### Weight

DSm616: Less than 35kg

DSm620: Less than 44kg

DSm620d: Less than 47kg

### Power source

110 - 120V, 220 - 240V, 50/60Hz

### Power consumption

Operation: Less than 1.28kW

Energy saver mode: Less than 40W

## Printer (Option)

### Print speed

16/20 prints per minute

### Printer language/resolution

Standard: PCL5e: 300/600dpi

PCL6: 600dpi

RPCS™: 300/600dpi

Option:

Adobe® PostScript® 3™: 600dpi

### Interface

Standard:

Ethernet 10 base-T/100 base-TX

USB2.0

Option:

Bi-directional IEEE1284 parallel port

Wireless LAN (IEEE802.11b)

Bluetooth

IEEE1394

### Memory

Standard: 192MB

### Network protocol

TCP/IP, IPX/SPX, NetBEUI, AppleTalk

### Supported Environments

Windows®

95/98/Me/NT4.0/2000/XP/2003 Server

Macintosh 8.6 or later (except for v10.0.X)

Unix/Linux

IBM iSeries /AS/400® using OS/400 Host

Print Transform

Netware 3.12/3.2/4.1/4.11/5.0/5.1/6

## Scanner (Option)

### Scan speed

Maximum 43 originals per minute  
(MH, A4)

### Resolution

600dpi

### Original size

A5 - A3

### Output formats

PDF/TIFF

### Bundled drivers

Network TWAIN

### Scan-to-Email

SMTP and TCP/IP required

### Destination addresses

Maximum 100

### Stored destination addresses

Maximum 150

### Address book

Via operation panel, Web Image Monitor  
or SmartDeviceMonitor™

## Fax (Option)

### Circuit

PSTN, PBX

### Compatibility

ITU-T (CCITT) G3

### Modem speed

Maximum 33.6Kbps

### Resolution

200 x 200/100/400dpi

### Compression method

MH, MR, MMR, JBIG

### Scanning speed

1 second (200 x 200dpi, A4, SEF)

### Memory capacity

Standard: 3MB

### Memory backup

Yes

## Software

SmartDeviceMonitor™<sup>1</sup>

Web SmartDeviceMonitor™

Web Image Monitor

DeskTopBinder™ V2 Lite<sup>1</sup>

ScanRouter™ V2 Lite<sup>1</sup>

<sup>1</sup> Bundled with printer/scanner option

## Other Options

- Platen cover
- 30-sheet automatic document feeder
- 50-sheet automatic reverse document feeder (DSm620d)
- 100-sheet one-bin tray (DSm620/DSm620d)
- 1 x 500-sheet paper tray
- 2 x 500-sheet paper trays
- Cabinets

Company management systems applied during the manufacturing of all Gestetner products conform to ISO9001 quality and ISO14001 environmental management standards.

As an ENERGY STAR Program Participant, Gestetner has determined that this product meets the ENERGY STAR guidelines for energy efficiency.

We reserve the right to make amendments to the technical specifications and external appearance of this equipment. Please note that the full range of options shown in this publication may not always be available. All brand and product names are recognized and hereby acknowledged, as registered trademarks of their respective owners.



Adobe PostScript® 3™



# Gestetner

Part of the NRG group

[www.gestetner.com](http://www.gestetner.com)



603562006680